

WebDT DS1500/ 1700

Interactive Digital Signage Kiosks
One Integrated Display

WebDT



Key Features:

- Elegant all-in-one, slim, space saving design; efficient mounting
- Fan-less, high performance operation
- High contrast LCD panel with wide viewing angle
- Low power consumption
- IR touch screen option
- Optional magnetic card reader
- Web-based software for remote display management
- Web-based, centralized content management and distribution software
- Remote player monitoring, control, and upgrade

The WebDT Signage System's DS1500/ 1700 offers an integrated computing display in one slim, mountable package. Ideal for digital signage and kiosk applications, this elegant all-in-one system can be remotely managed, and a Windows operating system makes it easy to integrate with other applications. This fully compatible solution of hardware and software, with touch and point-of-service options, offers efficient deployments. Bring dynamic interaction to your audience with the flexible DS1500/ 1700; the future of interactive signage has arrived.

Specifications:

Display	15" (DS1500) or 17" (DS1700) TFT LCD
Display Resolution	DS1500: Up to 1024 x 768; DS1700: Up to 1280 x 1024
Processor	1.5 GHz x86 processor
Memory (RAM)	1GB
Operating Systems	Windows® XP Embedded
Storage	2GB, 4GB, 8GB or 16GB flash module; 2.5" HDD
Display Enclosure	ABS + PC Plastic
Base or Pedestal	Optional: Detachable aluminum construction; VESA- compliant mounting
Control Buttons	Five (5) side buttons - Power (1) and Programmable (4)
Input/ Output Ports	1 Serial port, 4 USB 2.0 ports, RJ45 connector for Ethernet, 1 Audio-out jack, 1 Microphone-in jack, 1 Line-in jack, and 1 DC-in jack
Stereo speakers	Built-in speakers
Network Interface	Ethernet 10/100 MB Base-T LAN; 802.11a/b/g WLAN
AC/DC adapter	Input voltage 100~240V AC, 50/60 Hz Output: 18.5V, 3.5A
Power Cords	North America, EU, UK, China

Dimensions (H x W x D)	DS1500: 10.9 x 13.9 x 2.5 in, 278 x 354 x 63 mm; DS1700: 12.6 x 15.3 x 2.7 in, 320 x 388 x 68 mm
Weight	DS1500: 10.58 lbs (4.8 Kg); DS1700: 12.8 lbs (5.8 Kg)
Regulatory	FCC Class B, CE, C-Tick, RoHS compliant
Operating Temperature	0°C - 40°C
Humidity	0% - 90% non-condensing

* Specifications subject to change without notice.

Applications:

The DS1500/ 1700 signage system is ideal for the following applications:

- Kiosk
- Retail
- Entertainment/ Gaming
- Education
- Manufacturing
- Finance
- Healthcare
- Hospitality
- Control and Monitoring

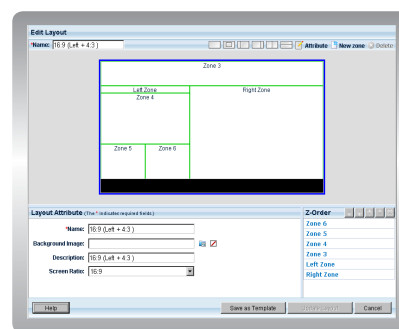


WebDT Content Manager

WebDT Content Manager software is one of the primary components in the comprehensive WebDT Signage System. This web-enabled server software provides central management of WebDT signage appliances as media players, and automates the design and distribution of a wide variety of multimedia file formats into playlists. Playlists are then set into schedules and stored in a central database for distribution to the network of signage appliances. With the WebDT Content Manager, the message to be played is assembled, scheduled, and delivered for dynamic playback over a network of appliances using standard file formats and protocols.

Feature Highlights:

- Groups and Players
- Media Management
- Ticker
- Multiple-zones
- Preset Templates
- Playlists
- Scheduling
- Urgent Casts
- System Management
- Reporting
- Auto Recovery



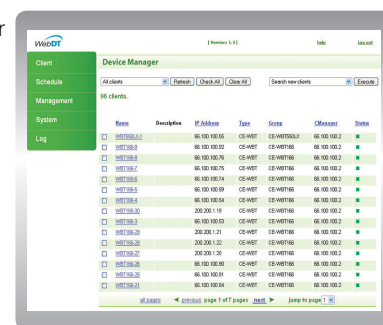
WebDT Device Manager

WebDT Device Manager is a comprehensive software management tool to remotely manage networked WebDT appliances. It provides a web browser interface fronting a database management system which supports—e.g., inventory, organize, control, update—a network of WebDT signage appliances over the LAN, WAN, or wireless networks.

The WebDT Device Manager utilizes “push and pull” technology to interact with remote appliances, allowing system administrators to inventory hardware, update applications and registry entries, shutdown/reboot/wake-up devices, update system firmware and software, along with access to advanced logging and scheduling capabilities.

Feature Highlights:

- Client Inventory
- History and Job Manager
- Scheduling
- Group Management
- Appliance Shutdown
- WakeOnLan
- Image Management
- File Package
- BIOS Management
- Database Support



Major Options

- Built-in 802.11a/b/g WLAN
- IR touch screen
- Magnetic card reader

* Options subject to change without notice.

Accessories



Desktop Stand
P/N: ACC-008-44