

SPECIFICATIONS

Processor	1.5GHz x86 processor
Memory (Storage)	1GB, 2GB, 4GB, or 8GB Flash
Memory (RAM)	512MB, or 1GB
Operating Systems	Microsoft® Windows® XP Embedded
Storage	Internal flash module; External USB
Display Resolution	Up to 1920 x 1080
Expansion	Mini-PCI (internal); USB
Control Buttons	1 front Power button
Input/Output Ports	DVI-I; 12V DC-in Jack; 3 Audio Jacks: Microphone-In, Line in, Headphone-Out Jacks; USB 2.0 Ports (4); RJ45 for Ethernet; Dipole antenna (optional)
Networking	10/100Mb BaseT LAN/ WiFi 802.11 a/b/g
Enclosure	Aluminum chassis; ABS plastic end-caps
Dimensions (H x W x D)	1.7 x 5.5 x 5.1 (in) 50 x 140 x 165 (mm)
Base Weight	1.2lbs (544g)
AC/DC Adapter	Input: 100 – 240V AC Output: 12V DC
Power	North America, EU, UK, China, Japan
Regulatory	FCC Class B, CE, C-tick, RoHS compliant
Operating Temperature	0° – 40°C
Humidity	0% – 90% non-condensing

* Note: Specifications subject to change without notice



Signage Appliance

SA1000

BASIC OPERATION GUIDE

ENGLISH

INTRODUCTION

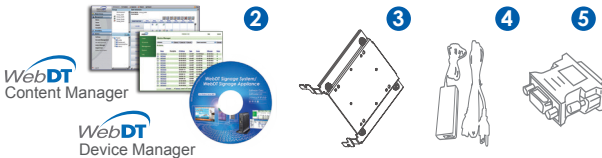
Thank you for acquiring the SA1000, a WebDT Signage Appliance by DT Research. The WebDT Signage Appliance facilitates the creation of a unique and powerful communication medium that offers unparalleled opportunities to capture an audience's attention at key decision-making locations. The SA1000 enables efficient deployment for digital signage, with reliable hardware features and an innovative server-based software suite. The SA1000 offers remote management of the devices and the displayed content with the WebDT Device Manager and WebDT Content Manager software, and operates with the Microsoft® Windows® XP Embedded system. The SA1000 together with the WebDT software suite, offers an efficient solution for delivering and managing messages that target audiences in the right place, at the right time.



Package Contents

- 1. WebDT Signage Appliance
- 2. WebDT Signage System software (includes WebDT Content Manager, WebDT Device Manager) and user guides in softcopy
- 3. VESA-compliant Mounting Bracket
- 4. AC/DC Power Adapter
- 5. DVI-VGA Adapter
- 6. Basic Operation Guide

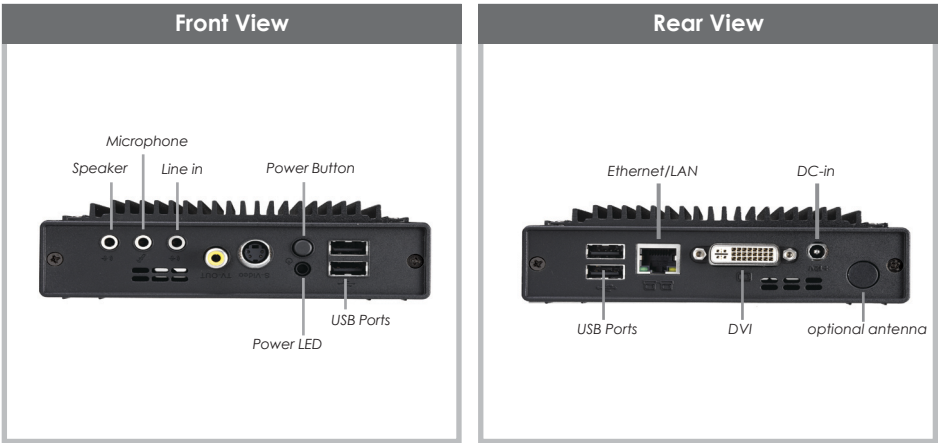
NOTE: The actual package contents may vary depending on the configuration acquired.



DT Research, Inc.
2000 Concourse Drive, San Jose, CA 95131 <http://www.dtresearch.com> | <http://signage.dtri.com>
Copyright©2008-2009, DT Research, Inc. All Rights Reserved.
DT Research, WebDT are registered trademark of DT Research, Inc.

BOG020409SA1000ENG

THE SA1000 Signage Appliance



Powering ON and OFF

The SA1000 is programmed to Power On automatically when power is first applied or re-established. There is also a Power Button, located on the front of the SA1000. To turn the SA1000 on, push and release the Power Button on the front bezel. The adjacent power LED will be lit (blue), and the corresponding interface will be shown on the display monitor.

To turn off the device, use the software shutdown interface provided, or unplug the appliance.

In the event of system lockup, unplug/re-plug the power cable. Also, the Power Button may be used to perform a reset on the device. To do that, push and hold the Power Button for at least 4 seconds. The system will shut down and all unsaved work may be lost. Pushing on the Power Button again will restart the device.

Server Installation

Please refer to the corresponding User Guides for software installation instructions.

Appliance Registration

After turning on the SA1000 for the first time, a screen prompt is displayed for registering the player. If the screen prompt is not shown, please follow the instructions below:

- 1. Press and hold "Control + Shift + Space" to exit the WCM Player software.
- 2. Navigate to Start | Programs | DT Research | WCM Player
- 3. Select Register Player Again. The Player Registration screen should appear. Fill in all fields to register. The required information is marked.
- 4. Click OK to register and connect to the WebDT Signage Appliance Publish Server.



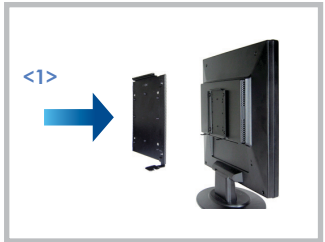
VESA Mounting Bracket Installation Guide for SA1000

The WebDT Signage Appliance package includes a VESA-compliant mounting bracket (1) which mounts the SA1000 (2) onto a VESA-compatible monitor or display.

NOTE: The VESA Mounting Bracket is compatible with most displays and monitors that support the VESA standard.

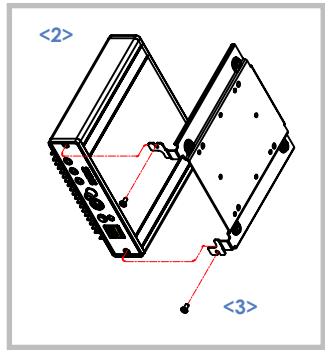
Step1:

- Locate the existing mounting holes on the monitor.
- Line the bracket holes up with the holes on the back of the monitor, as shown to the right.
- Place the screws to hold the mounting bracket in place and tighten the screws (do not over-tighten).



Step2:

- Remove the two M3 screws (3) originally on the SA1000 signage appliance.
- Place the SA1000 (2) on the bracket rail with the interface ports side facing downwards so that the two mounting holes on the appliance are aligned with the existing holes on the rail (see picture).



Step 3:

- Apply and tighten the screws into their original locations and make sure that the bracket and the SA1000 are properly secured.

Memory and Storage

Depending on the base software configuration, the user may need only the internal flash memory of the SA1000 for user's installed software and storage. The user may also supplement storage space with USB-based peripherals such as flash disks, disk drives, etc.

Options

The SA1000 WebDT Signage Appliance is designed to work with a range of custom and off-the-shelf options to enhance its applicability for various deployments.

- * USB-to-Serial and USB-to-PS/2 adapters
- * Internal mini-PCI wireless LAN (WLAN) adapters with dipole antenna